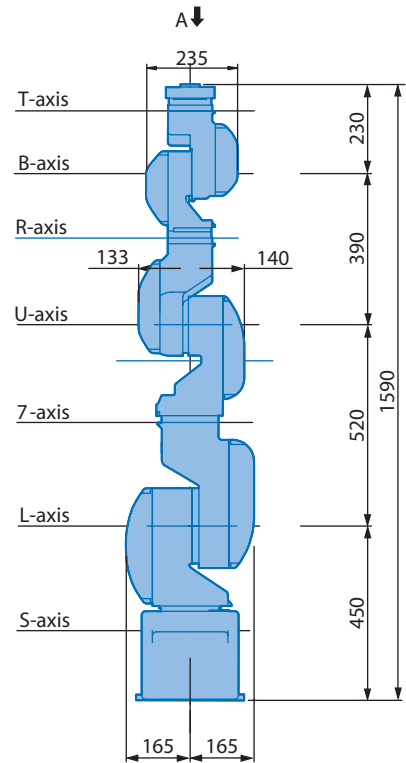
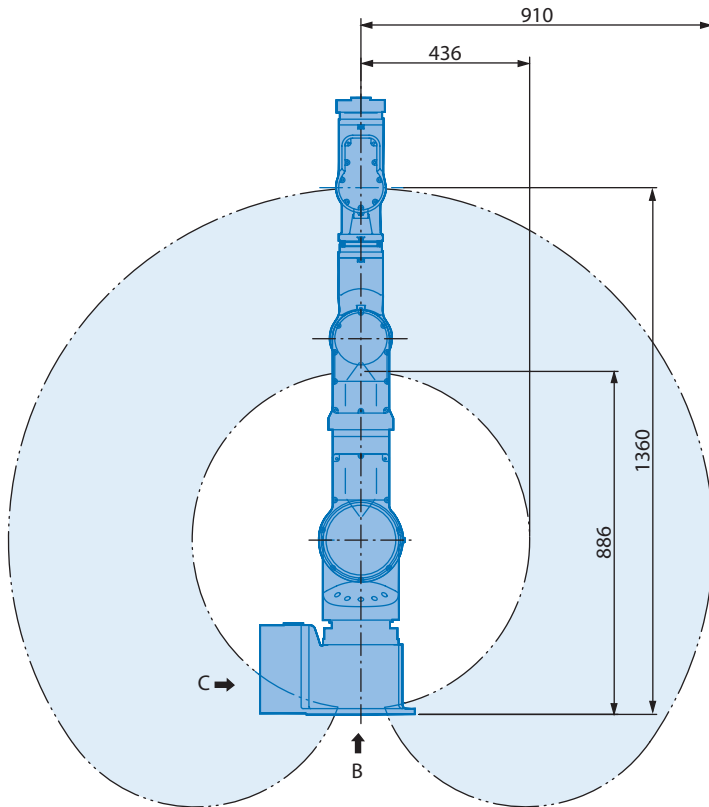


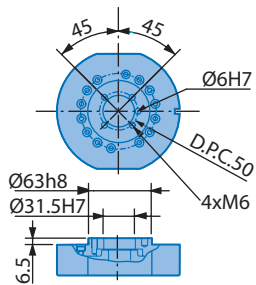
Industrial robot MOTOMAN-IA20



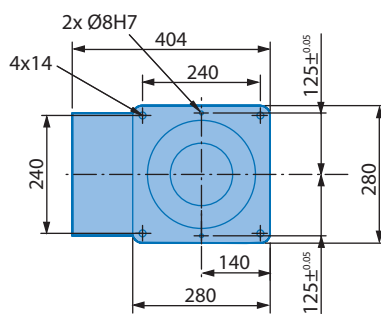
 **MOTOMAN**
A YASKAWA COMPANY



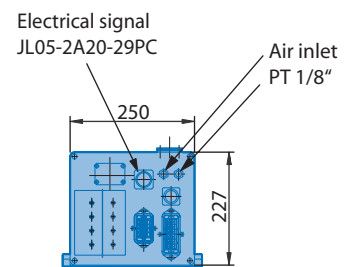
View A



View B



View C



Note

These dimensions are for reference only. Please request detail drawings for all design or engineering requirements.

Technical Specification for MOTOMAN-IA20

Controlled axis	7	Axis	Motion range	Maximum speed	Allowable moment	Allowable inertia
Payload	20 kg	S	±180°	130°/s	-	-
Repeatability	±0.1 mm	L	±125	130°/s	-	-
Maximum reach	1140 mm	7	±180	170°/s	-	-
Weight	120 kg	U	±125	170°/s	-	-
Power requirements	3.4 kVA	R	±180	300°/s	58.8 Nm	4 kg·m ²
Mounting positions	Floor, wall and ceiling	B	±120	300°/s	58.8 Nm	4 kg·m ²
Ambient conditions	0 to +45°C, 20-80% RH	T	±180	580°/s	29.4 Nm	2 kg·m ²

Technical data may be subject to change without previous notice · MOTOMAN Robotics Europe AB 2007 · Reg. No. Mrs6240GB.3.L



European Headquarters

MOTOMAN Robotics Europe AB
 Box 4004, SE-390 04 Kalmar, SWEDEN
 Phone +46 (0)480 417 800 · Fax +46 (0)480 417 999
www.motoman.se

